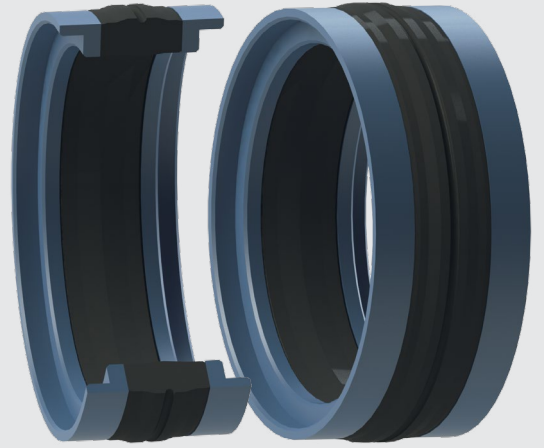


# PISTON SEALS BECA 571



## DESCRIPTION

The BECA 571 profile is a high-performing, double acting compact piston seal composed of a soft rubber ring and a POM wear/back-up ring as standard.

## ADVANTAGES

- Good sealing effect
- Excellent extrusion resistance
- Excellent wear resistance
- Reliable sealing for significant and sudden pressure variations

## APPLICATIONS

- Agriculture
- Mobile machinery
- Hydraulic cylinders

## MATERIALS

### Profiled seal

- NBR 80 Shore A
- FKM 80 Shore A

### Wear/back-up rings

- Polyoxymethylene - POM
- Bronze-filled PTFE

Other grades of materials are available. Please contact our experts.

## TECHNICAL DATA

Temperature	-30°C / +200°C
Pressure	40 MPa
Speed	0.5 m/sec
Media	Mineral hydraulic oils Fire-resistant liquids Biocompatible fluids Water Others (contact our experts)

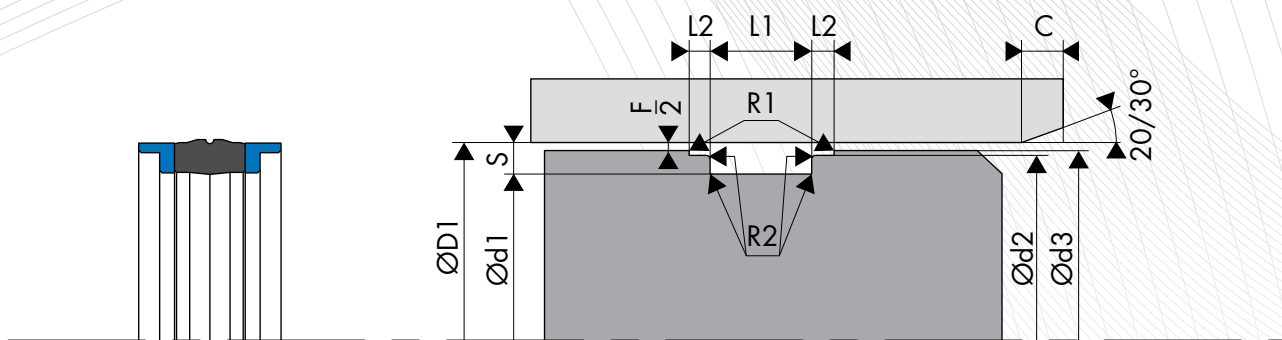
The figures above indicate the maximum values and may not be cumulated. They may be developed, depending on the materials used.

## SURFACE ROUGHNESS

Roughness	Dynamic surface area	Static surface area	Groove flanks
Ra	0.1 - 0.4 µm	≤1.6 µm	≤3.2 µm
Rz	0.63 - 2.5 µm	≤6.3 µm	≤10.0 µm
Rmax	1.0 - 4.0 µm	≤10.0 µm	≤16.0 µm

## CHAMFERS AND RADIUS

Radial section S	Radius R1	Radius R2	Min. chamfer C
4.00	0.40	0.40	2.50
5.00	0.40	0.40	3.00
6.00	0.40	0.40	3.00
7.50	0.40	0.40	4.00
8.50	0.40	0.40	5.00
10.00	0.80	0.80	6.00
15.00	0.80	0.80	8.00



**DIMENSIONS**

Part number	Bore diameter ØD1 H11	Groove dimensions						
		Ød1 h9	Ød2 h9	Ød3 h11	Ød4 h9	L1 0/+0.15	L2 0/+0.15	L3
571.0035AK8	35.00	27.00	31.00	34.40	-	15.50	3.20	-
571.R035AK8	35.00	27.00	31.00	34.40	24.00	15.50	3.20	3.10
<b>571.0036AK8</b>	<b>36.00</b>	<b>28.00</b>	<b>32.00</b>	<b>35.40</b>	-	<b>15.50</b>	<b>3.20</b>	-
571.1040AK8	40.00	24.00	35.40	38.70	-	18.40	6.35	-
571.5040AK8	40.00	26.00	36.00	39.40	-	15.50	3.20	-
571.2040AK8	40.00	30.00	35.40	38.70	-	16.30	6.35	-
571.0040AK8	40.00	32.00	36.00	39.40	-	15.50	3.20	-
571.R040AK8	40.00	32.00	36.00	39.40	29.00	15.50	3.25	3.10
571.3040AK8	40.00	32.00	37.00	39.00	-	10.00	4.00	-
571.0042AK8	42.00	34.00	38.00	41.40	-	15.50	3.20	-
571.0045AK8	45.00	37.00	41.00	44.40	-	15.50	3.20	-
571.1025AK8	25.00	16.00	20.00	24.40	-	13.50	3.20	-
571.R045AK8	45.00	37.00	41.00	44.40	34.00	15.50	3.20	3.10
571.1050AK8	50.00	34.00	45.40	48.70	-	18.40	6.35	-
571.0050AK8	50.00	38.00	46.00	49.40	-	20.50	4.20	-
<b>571.3050AK8</b>	<b>50.00</b>	<b>40.00</b>	<b>47.00</b>	<b>49.00</b>	-	<b>12.50</b>	<b>4.00</b>	-
571.1055AK8	55.00	39.00	50.40	53.60	-	18.40	6.35	-
571.0055AK8	55.00	43.00	51.00	54.40	-	20.50	4.20	-
571.1060AK8	60.00	44.00	55.40	58.70	-	18.40	6.35	-
571.0060AK8	60.00	48.00	56.00	59.40	-	20.50	4.20	-
571.1063AK8	63.00	47.00	58.40	61.70	-	18.40	6.35	-
571.0063AK8	63.00	51.00	59.00	62.40	-	20.50	4.20	-
<b>571.R025AK8</b>	<b>25.00</b>	<b>17.00</b>	<b>21.00</b>	<b>24.40</b>	<b>14.00</b>	<b>13.50</b>	<b>3.20</b>	<b>2.10</b>
<b>571.3063AK8</b>	<b>63.00</b>	<b>53.00</b>	<b>60.00</b>	<b>62.00</b>	-	<b>12.50</b>	<b>4.00</b>	-
571.0065AK8	65.00	50.00	61.00	64.40	-	18.30	4.20	-
571.1070AK8	70.00	50.00	64.20	68.30	-	22.40	6.35	-
571.0070AK8	70.00	58.00	66.00	69.40	-	20.50	4.20	-
571.1075AK8	75.00	55.00	69.20	73.30	-	22.40	6.35	-
571.0075AK8	75.00	63.00	71.00	74.40	-	20.50	4.20	-
571.1080AK8	80.00	60.00	74.20	78.30	-	22.40	6.35	-
571.3080AK8	80.00	65.00	76.00	78.50	-	20.00	5.00	-
<b>571.0080AK8</b>	<b>80.00</b>	<b>66.00</b>	<b>76.00</b>	<b>79.40</b>	-	<b>22.50</b>	<b>5.20</b>	-
571.1085AK8	85.00	65.00	79.20	83.30	-	22.40	6.35	-
571.3025AK8	25.00	17.00	22.00	24.00	-	10.00	4.00	-
571.0085AK8	85.00	71.00	81.00	84.40	-	22.50	5.20	-
571.1090AK8	90.00	70.00	84.20	88.30	-	22.40	6.35	-
571.0090AK8	90.00	76.00	86.00	89.40	-	22.50	5.20	-
571.1095AK8	95.00	75.00	89.20	93.30	-	22.40	6.35	-
571.1100AK8	100.00	75.00	93.20	98.00	-	22.40	6.35	-
571.3100AK8	100.00	85.00	96.00	98.50	-	20.00	5.00	-
<b>571.0100AK8</b>	<b>100.00</b>	<b>86.00</b>	<b>96.00</b>	<b>99.40</b>	-	<b>22.50</b>	<b>5.20</b>	-
571.2100AK8	100.00	87.00	93.80	98.50	-	14.00	6.00	-
571.2110AK8	110.00	90.00	104.10	108.30	-	22.50	6.35	-
571.1110AK8	110.00	90.00	104.10	108.30	-	25.30	6.35	-
571.R030AK8	30.00	22.00	26.00	29.40	19.00	13.50	3.20	2.10

Part number	Bore diameter ØD1 H11	Groove dimensions						
		Ød1 h9	Ød2 h9	Ød3 h11	Ød4 h9	L1 0/+0.15	L2 0/+0.15	L3
571.0110AK8	110.00	96.00	106.00	109.40	-	22.50	5.20	-
571.0115AK8	115.00	90.00	111.00	114.40	-	22.40	5.20	-
571.0120AK8	120.00	106.00	116.00	119.40	-	22.50	5.20	-
571.3125AK8	125.00	105.00	120.00	123.00	-	25.00	6.30	-
571.0125AK8	125.00	108.00	121.00	124.40	-	26.50	7.20	-
571.5130AK8	130.00	105.00	122.60	127.50	-	25.30	9.50	-
571.3140AK8	140.00	120.00	135.00	138.00	-	25.00	6.30	-
571.0140AK8	140.00	123.00	136.00	139.40	-	26.50	7.20	-
571.0150AK8	150.00	133.00	148.00	149.40	-	26.50	7.20	-
571.0160AF8	160.00	143.00	156.00	159.40	-	26.50	7.20	-
571.1032AK8	32.00	22.00	26.00	31.40	-	15.50	3.20	-
571.0160AK8	160.00	143.00	156.00	159.40	-	26.50	7.20	-
571.0170AK8	170.00	153.00	166.00	169.40	-	26.50	7.20	-
571.3180AK8	180.00	150.00	172.00	178.00	-	36.00	12.50	-
571.0180AK8	180.00	163.00	176.00	179.50	-	26.50	7.20	-
571.0200AK8	200.00	180.00	196.00	199.40	-	31.50	9.20	-
571.0220AK8	220.00	200.00	216.00	219.40	-	31.50	9.20	-
571.0250AK8	250.00	230.00	246.00	249.40	-	31.50	9.20	-
571.R032AK8	32.00	24.00	28.00	31.40	21.00	15.50	3.20	3.10
571.3032AK8	32.00	24.00	29.00	31.00	-	10.00	4.00	-
571.5035AK8	35.00	25.00	29.00	34.40	-	15.50	3.20	-

The figures highlighted in bold correspond to the dimensions for standard ISO 6547, with the bore diameters in line with standard ISO 3320. Other intermediate sizes can be provided.