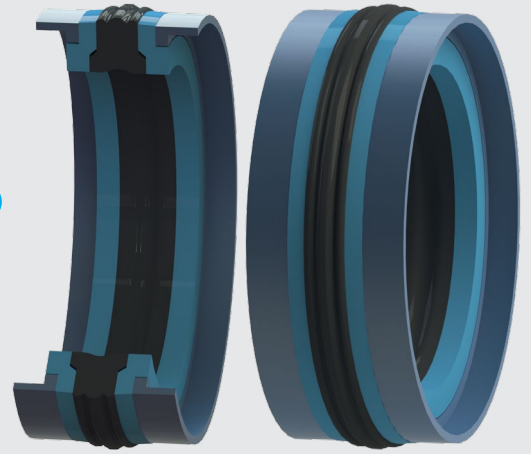


PISTON SEALS

BECA 579S



DESCRIPTION

The BECA 579S profile is a high-performing, double acting compact piston seal composed of a flexible rubber ring, two polyurethane back-up rings and two L-shaped POM wear rings.

ADVANTAGES

- Good sealing effect
- Excellent extrusion resistance
- Excellent wear resistance
- Reliable sealing for significant and sudden pressure variations
- Assembly in closed groove, reduced machining costs
- Economic wear and sealing solution

APPLICATIONS

- Agriculture
- Mobile machinery
- Hydraulic cylinders

MATERIALS

Profiled seal

NBR 80 Shore A

Back-up rings

Polyurethane 97 Shore A

Wear rings

Polyoxymethylene - POM

TECHNICAL DATA

Temperature	-30°C / +100°C
Pressure	50 MPa
Speed	0.5 m/sec
Media	Mineral hydraulic oils

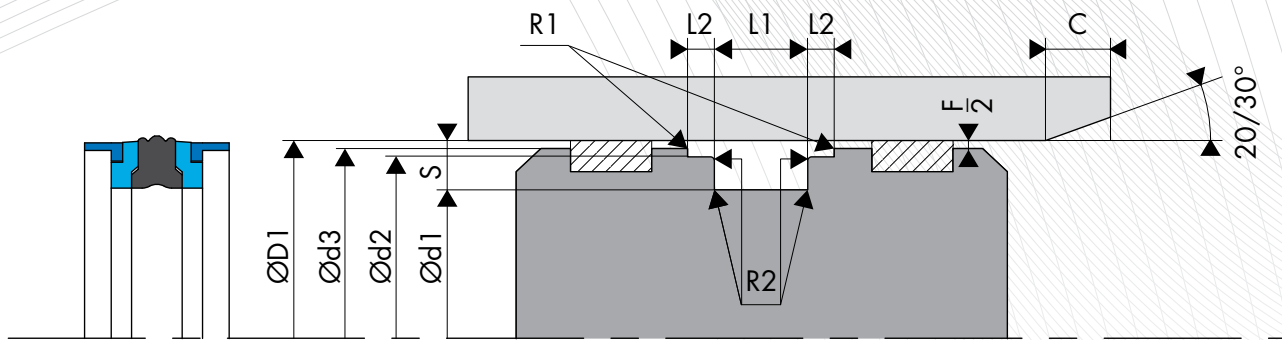
The figures above indicate the maximum values and may not be cumulated. They may be developed, depending on the materials used.

SURFACE ROUGHNESS

Roughness	Dynamic surface area	Static surface area	Groove flanks
Ra	0.1 - 0.4 µm	≤1.6 µm	≤3.2 µm
Rz	0.63 - 2.5 µm	≤6.3 µm	≤10.0 µm
Rmax	1.0 - 4.0 µm	≤10.0 µm	≤16.0 µm

CHAMFERS AND RADIUS

Radial section S	Radius R1	Radius R2	Chamfer C
4.00	0.40	0.40	2.50
5.00	0.40	0.40	3.00
6.00	0.40	0.40	3.00
7.50	0.40	0.40	4.00
8.50	0.40	0.40	5.00
10.00	0.80	0.80	6.00
15.00	0.80	0.80	8.00



DIMENSIONS

Part number	Bore diameter ØD1 H9	Groove dimensions				
		Ød1 h9	Ød2 h9	Ød3 h11	L1 0/+0.20	L2 0/+0.10
579.0020BK8	20.00	11.00	17.00	19.00	13.50	2.10
579.0032BK8	32.00	22.00	28.00	31.00	15.50	2.60
579.1032BK8	32.00	22.00	28.50	30.50	16.40	6.35
579.0035BK8	35.00	25.00	31.00	34.00	15.50	2.60
579.1035BK8	35.00	25.00	31.40	33.50	16.40	6.35
579.0040BK8	40.00	26.00	36.00	39.00	15.50	2.60
579.2040BK8	40.00	30.00	36.00	38.00	12.50	4.00
579.3040BK8	40.00	30.00	37.00	39.00	12.50	4.00
579.1040BK8	40.00	30.00	35.40	38.50	16.40	6.35
579.0042BK8	42.00	28.00	38.00	41.00	15.50	2.60
579.0045BK8	45.00	29.00	40.40	43.50	18.40	6.35
579.0022BK8	22.00	13.00	19.00	21.00	13.50	2.10
579.1045BK8	45.00	31.00	41.00	44.00	15.50	2.60
579.2045BK8	45.00	35.00	40.40	43.50	16.40	6.35
579.0050BK8	50.00	34.00	45.40	48.50	18.40	6.35
579.1050BK8	50.00	34.00	46.00	49.00	20.50	3.10
579.0055BK8	55.00	39.00	50.36	53.50	18.40	6.35
579.1055BK8	55.00	39.00	51.00	54.00	20.50	3.10
579.0056BK8	56.00	40.00	52.00	55.00	20.50	3.10
579.0060BK8	60.00	44.00	55.40	58.50	18.40	6.35
579.1060BK8	60.00	44.00	56.00	59.00	20.50	3.10
579.0063BK8	63.00	47.00	58.40	61.50	18.40	6.35
579.0025BK8	25.00	15.00	21.00	23.00	12.00	4.00
579.3063BK8	63.00	47.00	58.40	61.50	19.40	6.35
579.4063BK8	63.00	47.00	59.00	62.00	20.50	3.10
579.0065BK8	65.00	49.00	61.00	64.00	20.50	3.10
579.1065BK8	65.00	50.00	60.40	63.50	18.40	6.35
579.0070BK8	70.00	50.00	64.20	68.30	22.40	6.35
579.1070BK8	70.00	54.00	66.00	69.00	20.50	3.10
579.0075BK8	75.00	55.00	69.20	73.30	22.40	6.35
579.1075BK8	75.00	59.00	71.00	74.00	20.50	3.10
579.0080BK8	80.00	60.00	74.15	78.30	22.40	6.35
579.1080BK8	80.00	62.00	76.00	79.00	22.50	3.60
579.2025BK8	25.00	15.00	22.00	24.00	12.50	4.00
579.0085BK8	85.00	65.00	79.15	83.30	22.40	6.35
579.0090BK8	90.00	70.00	84.15	88.30	22.40	6.35
579.1090BK8	90.00	72.00	86.00	89.00	22.50	3.60
579.0095BK8	95.00	75.00	89.15	93.30	22.40	6.35
579.0100BK8	100.00	75.00	93.15	98.00	22.40	6.35
579.1100BK8	100.00	82.00	96.00	99.00	22.50	3.60
579.0105BK8	105.00	80.00	98.10	103.00	22.40	6.35
579.0110BK8	110.00	85.00	103.10	108.00	22.40	6.35
579.1110BK8	110.00	92.00	106.00	109.00	22.50	3.60
579.0115BK8	115.00	90.00	108.10	113.00	22.40	6.35
579.1025BK8	25.00	15.00	21.45	23.50	16.40	6.35

Part number	Bore diameter ØD1 H9	Groove dimensions				
		Ød1 h9	Ød2 h9	Ød3 h11	L1 0/+0.20	L2 0/+0.10
579.1115BK8	115.00	97.00	111.00	114.00	22.50	3.60
579.0120BK8	120.00	95.00	113.10	118.10	22.40	6.35
579.0125BK8	125.00	100.00	118.10	123.00	25.40	6.35
579.1125BK8	125.00	103.00	121.00	124.00	26.50	5.10
579.0130BK8	130.00	105.00	122.60	127.50	25.40	9.50
579.1130BK8	130.00	105.00	123.10	128.00	25.40	6.35
579.0133BK8	133.00	115.00	125.60	130.50	22.40	9.52
579.0135BK8	135.00	110.00	127.60	132.50	25.40	9.50
579.1135BK8	135.00	110.00	128.10	133.00	25.40	6.35
579.0140BK8	140.00	115.00	132.60	137.50	25.40	9.50
579.3025BK8	25.00	16.00	22.00	24.00	13.50	2.10
579.1140BK8	140.00	115.00	133.00	138.00	25.40	6.35
579.2140BK8	140.00	118.00	136.00	139.00	26.50	5.10
579.0145BK8	145.00	120.00	137.60	142.50	25.40	9.50
579.1145BK8	145.00	120.00	138.30	142.95	25.40	6.35
579.2150BK8	150.00	125.00	142.60	147.50	25.40	9.50
579.1150BK8	150.00	125.00	143.00	148.00	25.40	6.35
579.0150BK8	150.00	128.00	146.00	149.00	26.50	5.10
579.0152BK8	152.40	127.00	145.00	149.91	31.75	9.50
579.0155BK8	155.00	130.00	147.60	152.50	25.40	9.50
579.1155BK8	155.00	130.00	148.00	153.00	25.40	6.35
579.0028BK8	28.00	19.00	25.00	27.00	13.50	2.10
579.0160BK8	160.00	130.00	152.60	157.50	25.40	9.50
579.1160BK8	160.00	130.00	153.00	157.50	25.40	6.35
579.2160BK8	160.00	135.00	152.60	157.50	25.40	9.50
579.3160BK8	160.00	138.00	156.00	159.00	26.50	5.10
579.0165BK8	165.00	140.00	157.60	162.50	25.40	9.50
579.0170BK8	170.00	145.00	161.70	167.10	25.40	12.70
579.1170BK8	170.00	148.00	166.00	169.00	26.50	5.10
579.0175BK8	175.00	150.00	166.70	172.10	25.40	12.70
579.0180BK8	180.00	150.00	172.95	177.87	35.40	6.35
579.1180BK8	180.00	155.00	171.70	177.10	25.40	12.70
579.0030BK8	30.00	17.00	26.50	28.50	15.40	6.35
579.0185BK8	185.00	160.00	176.70	182.10	25.40	12.70
579.0190BK8	190.00	165.00	181.70	187.00	25.40	12.70
579.0195BK8	195.00	170.00	186.70	192.00	25.40	12.70
579.0200BK8	200.00	175.00	191.60	197.00	25.40	12.70
579.1200BK8	200.00	175.00	196.00	199.00	31.50	6.60
579.0210BK8	210.00	185.00	201.60	207.00	25.40	12.70
579.0220BK8	220.00	190.00	212.70	217.90	35.40	6.35
579.1220BK8	220.00	195.00	211.60	217.00	25.40	12.70
579.0230BK8	230.00	205.00	221.60	227.00	25.40	12.70
579.0240BK8	240.00	215.00	231.60	237.00	25.40	12.70
579.1030BK8	30.00	21.00	27.00	29.00	13.50	2.10
579.0250BK8	250.00	220.00	242.90	247.85	35.40	6.35

The figures highlighted in bold correspond to the dimensions for standard ISO 6547, with the bore diameters in line with standard ISO 3320. Other intermediate sizes can be provided.