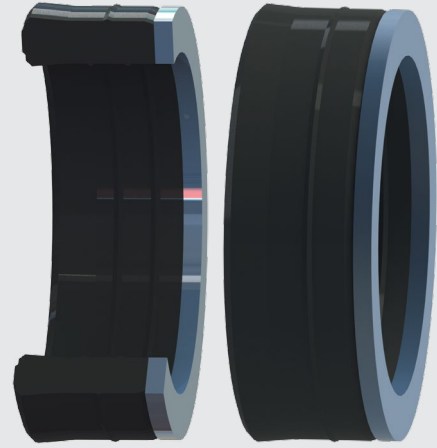


ROD SEALS

BECA 200



DESCRIPTION

The BECA 200 profile is a compact rod seal composed of a fabric part, a rubber part and a POM back-up ring as standard. It can be assembled in a groove according to standard ISO 5597.

ADVANTAGES

- Excellent wear resistance
- Excellent resistance to high pressures
- Good chemical resistance
- Can be assembled in a closed groove for $\varnothing d1 \geq 35.00$ mm

APPLICATIONS

- Mobile hydraulics
- Presses
- Aftermarket
- Standard cylinders

MATERIALS

Profiled seal

- NBR 80 Shore A
- FKM 80 Shore A

Back-up ring

- Polyoxymethylene - POM
- Bronze-filled PTFE

Other grades of materials are available. Please contact our experts.

TECHNICAL DATA

Temperature	-30°C / +200°C
Pressure	70 MPa
Speed	0.5 m/sec
Media	Mineral hydraulic oils Fire-resistant liquids Biocompatible fluids Water Others (contact our experts)

The figures above indicate the maximum values and may not be cumulated. They may be developed, depending on the materials used.

EXTRUSION GAPS

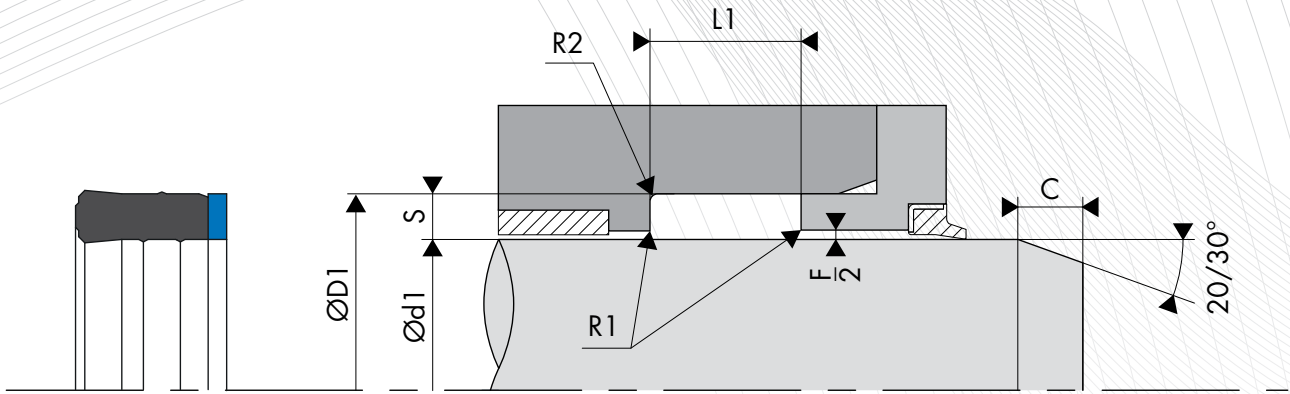
Pressure MPa	Radial gap F/2
25 MPa	0.80
30 MPa	0.70
50 MPa	0.50
70 MPa	0.35

SURFACE ROUGHNESS

Roughness	Dynamic surface area	Static surface area	Groove flanks
Ra	0.1 - 0.4 μm	$\leq 1.6 \mu\text{m}$	$\leq 3.2 \mu\text{m}$
Rz	0.63 - 2.5 μm	$\leq 6.3 \mu\text{m}$	$\leq 10.0 \mu\text{m}$
Rmax	1.0 - 4.0 μm	$\leq 10.0 \mu\text{m}$	$\leq 16.0 \mu\text{m}$

CHAMFERS AND RADIUS

Radial section S	Radius R1	Radius R2	Chamfer C
5.00	0.40	0.60	2.50
7.50	0.80	1.00	4.00
10.00	0.80	1.00	5.00
12.50	1.00	1.20	6.50



DIMENSIONS

Part number	Rod diameter Ød1 f8	Groove diameter ØD1 H11	Groove width L1 0/+0.20
200.0028038	28.00	38.00	16.00
200.0030040	30.00	40.00	16.00
200.0032042	32.00	42.00	16.00
200.0035045	35.00	45.00	16.00
200.0036046	36.00	46.00	16.00
200.0040050	40.00	50.00	16.00
200.0045055	45.00	55.00	16.00
200.0045060	45.00	60.00	22.50
200.0046061	46.00	61.00	22.50
200.0050060	50.00	60.00	16.00
200.0051071	51.00	71.00	30.00
200.0055070	55.00	70.00	25.00
200.0056071	56.00	71.00	25.00
200.0060080	60.00	80.00	30.00
200.0061081	61.00	81.00	30.00

Part number	Rod diameter Ød1 f8	Groove diameter ØD1 H11	Groove width L1 0/+0.20
200.0063078	63.00	78.00	25.00
200.0065080	65.00	80.00	25.00
200.0070085	70.00	85.00	25.00
200.0070090	70.00	90.00	30.00
200.0071091	71.00	91.00	30.00
200.0080095	80.00	95.00	25.00
200.0080100	80.00	100.00	30.00
200.0081101	81.00	101.00	30.00
200.0090105	90.00	105.00	25.00
200.0090110	90.00	110.00	30.00
200.0091111	91.00	111.00	30.00
200.0100120	100.00	120.00	32.00
200.0110130	110.00	130.00	32.00
200.0125145	125.00	145.00	32.00
200.0140160	140.00	160.00	32.00

The figures highlighted in bold correspond to the dimensions for standard ISO 5597, with the rod diameters in line with standard ISO 3320. Other intermediate sizes can be provided.