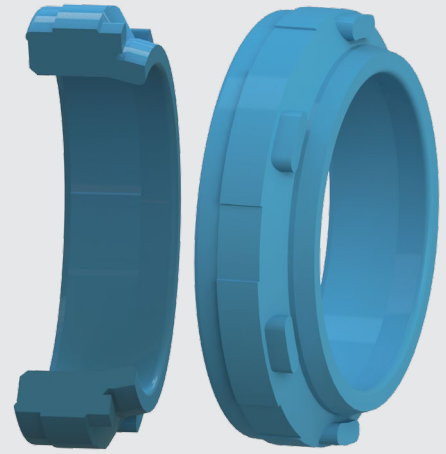


ROD SEALS BECA 390



DESCRIPTION

The BECA 390 profile is a snap-on polyurethane pneumatic shock absorber seal.

ADVANTAGES

Effective and consistent damping effect with automatic centring

APPLICATIONS

Shock absorbers
Distributor
Standard cylinders

MATERIALS

PU 93 Shore A - Blue
PU 96 Shore A - Blue
High temp. PU 96 Shore A - Beige

Other grades of materials are available.
Please contact our experts.

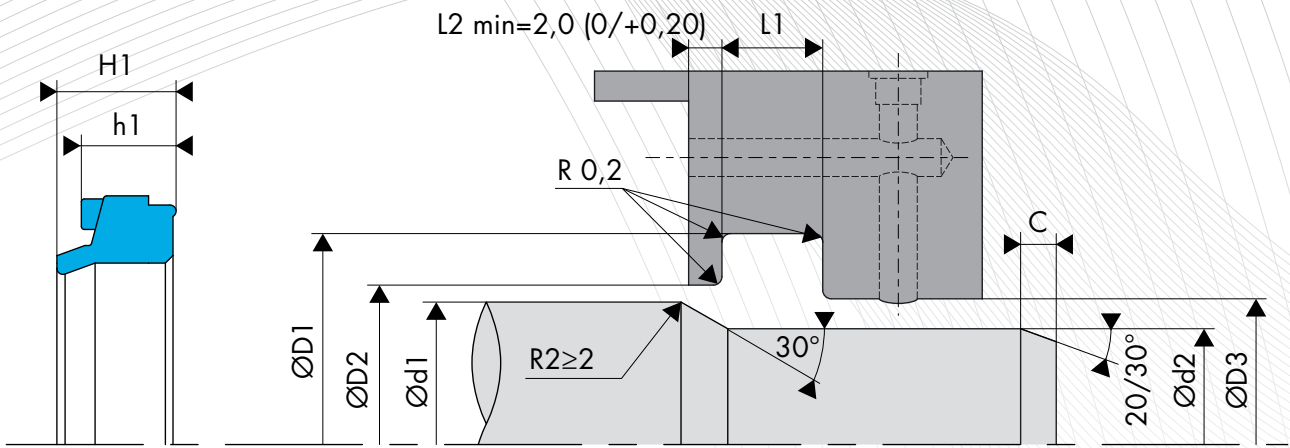
TECHNICAL DATA

Temperature	-30°C / +110°C
Pressure	1.6 MPa
Speed	1 m/s
Media	Lubricated air Oil-free air Non-aggressive gases

The figures above indicate the maximum values and may not be cumulated. They may be developed, depending on the materials used.

SURFACE ROUGHNESS

Roughness	Dynamic surface area	Static surface area	Groove flanks
Ra	0.1 - 0.4 µm	≤1.6 µm	≤3.2 µm
Rz	0.63 - 2.5 µm	≤6.3 µm	≤10.0 µm
Rmax	1.0 - 4.0 µm	≤10.0 µm	≤16.0 µm



DIMENSIONS

Part number	Rod diameter Ød1 h10	Groove dimensions				Seal height		Groove width L1 0/+0.10
		Ød2 h11	ØD1 H11	ØD2 H11	ØD3 H11	H1	h1	
390.0950154	9.50	8.00	15.00	12.00	10.00	5.00	4.00	5.00
390.0120185	12.00	10.00	18.00	15.50	13.00	5.00	4.10	4.80
390.0120207	12.00	10.00	20.00	17.00	13.00	7.80	6.30	7.00
390.0140225	14.00	12.00	22.00	18.50	15.00	5.50	4.50	5.20
390.0140227	14.00	12.00	22.00	19.00	15.00	7.80	6.30	7.00
390.0160225	16.00	14.00	22.00	19.50	17.00	5.50	4.50	5.20
390.0160247	16.00	14.00	24.00	21.00	17.00	7.80	6.30	7.00
390.0180267	18.00	16.00	26.00	23.00	19.00	7.80	6.30	7.00
390.0200287	20.00	17.50	28.00	24.00	21.00	7.80	6.30	7.00
390.0220307	22.00	19.50	30.00	26.00	23.00	7.80	6.30	7.00
390.0240327	24.00	22.50	32.00	28.00	25.00	7.80	6.30	7.00
390.0250337	25.00	23.50	33.00	29.00	26.00	7.80	6.30	7.00
390.0280367	28.00	25.50	36.00	32.00	29.00	7.80	6.30	7.00
390.0300407	30.00	27.50	40.00	35.00	31.50	7.80	6.20	7.00
390.0320427	32.00	29.00	42.00	37.00	33.50	7.80	6.20	7.00
390.0340447	34.00	31.00	44.00	39.00	35.50	7.80	6.30	7.00
390.0360467	36.00	33.00	46.00	41.00	37.50	7.80	6.20	7.00
390.0400507	40.00	37.00	50.00	45.00	41.50	7.80	6.20	7.00
390.0450557	45.00	42.00	55.00	50.00	46.50	7.80	6.30	7.00
390.0500607	50.00	47.00	60.00	55.00	51.50	7.80	6.20	7.00
390.0500671	50.00	47.00	67.00	58.00	51.50	9.50	10.00	10.50
390.0570741	57.00	54.00	74.00	65.00	60.00	9.50	10.00	10.50